



CHRISTMAS

IN ABERDEEN

2020

**FESTIVE LIGHTING
PROPOSAL**

FESTIVE LIGHTING PROPOSAL

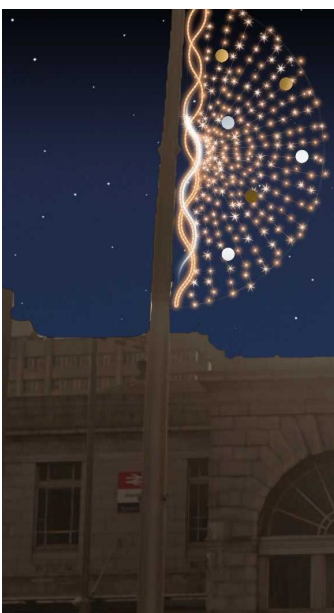
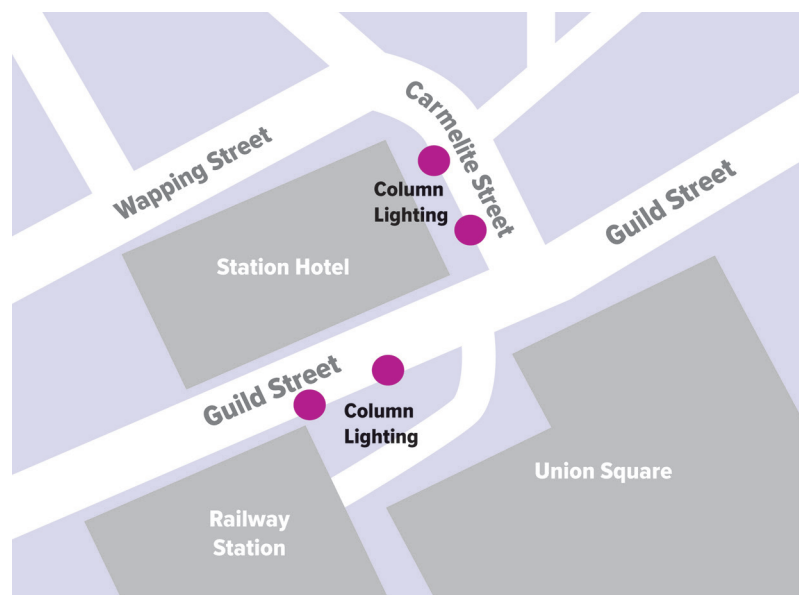
Introduction

The city centre environment will be transformed by additional festive lighting installations, bringing the city to life over the festive period. Boosting the economy is a vital focus when repurposing the festive budget, and it is hoped that the warm and friendly lighting will create a welcoming atmosphere in the city centre, consequently encouraging residents and local visitors to stay longer and support local businesses. The proposal is designed to create a welcoming trail from Aberdeen's transport hub into the City Centre.

Guild Street & Carmelite Street

4 column mounted lighting features will be installed between Guild Street and Carmelite Street, leading people from Union Square / Train and Bus Station to the Green.

These column mounted lighting features, will be purchased to allow for Aberdeen City Council to install these additional features annually, along with the current festive lighting contract.



Example of potential lighting features, dependent on availability others may be used

The Green

Upon entering The Green, visitors and residents will be welcomed by a 9.5m artificial Christmas Tree, spotlights highlighting the NUART murals on Aberdeen Market and Trinity Centre, and over 1000 white 'p lights' decorating the trees in the area.



Christmas Tree

9.5m artificial Christmas Tree dressed, lit with P Lights and with a star on top. These features are in secured in place within concrete bases which will be dressed with white picket style fencing.



FESTIVE LIGHTING PROPOSAL

Existing Trees

The 2 trees at the entrance to The Green from Hadden Street will be lit with 1000 white p lights, these lights will remain in situ for the duration of their lifespan and can be turned on annually as part of the annual festive lighting programme for the city.



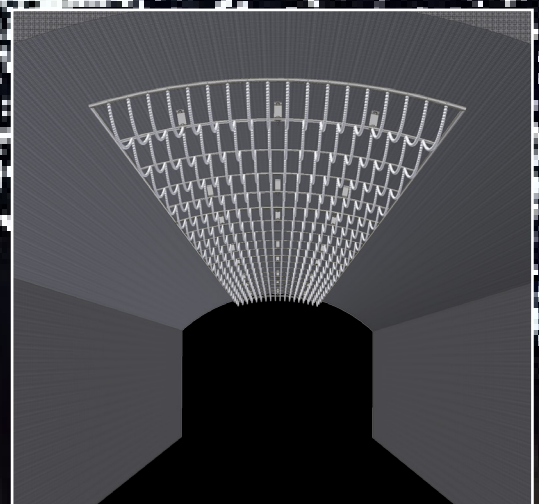
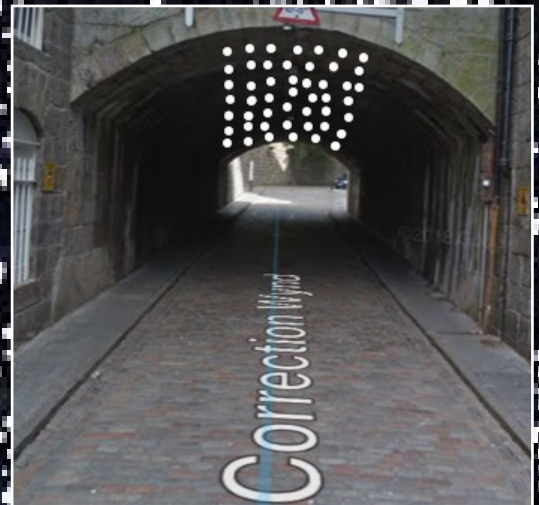
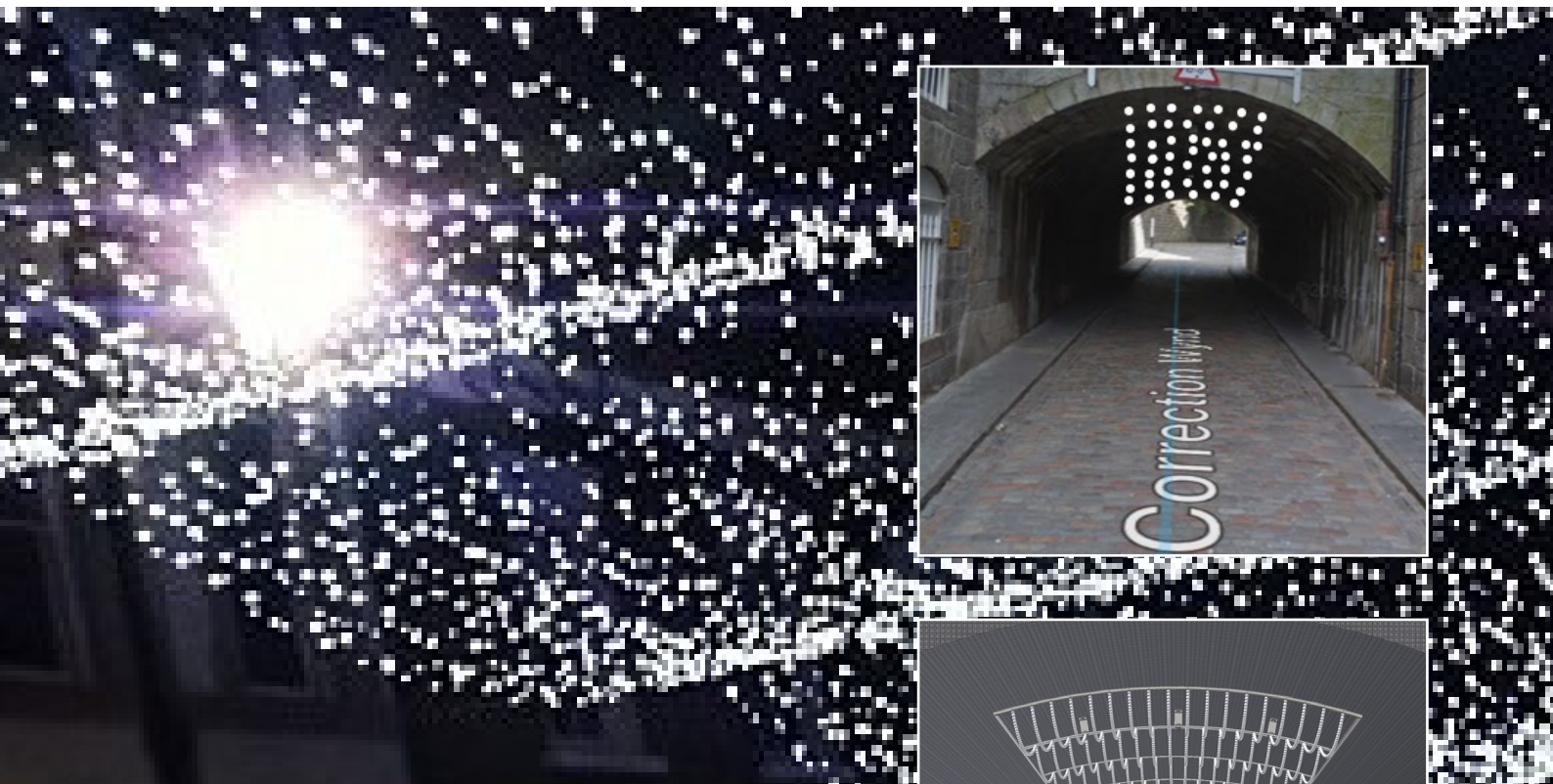
NUART Murals

6 temporary LED Spotlights will be used at night to highlight the NUART murals located at either end of The Green on Aberdeen Market and the Trinity Centre.



Correction Wynd

Leaving The Green, pedestrians will be led towards Correction Wynd and under Union Street, where the underside of the bridge will be lit with overhead sheet lighting, creating a welcoming and festive ceiling of light walkway. Festoon lighting will be installed on both sides of Correction Wynd to compliment the historic environment that leads pedestrians towards St Nicholas Street.



Ceiling of Light

Frames containing 4,000 white P Lights will be fixed to the underside of the bridge crossing Correction Wynd. This work will be subject to securing the relevant permissions. This feature will be removed at the end of the festive period but could be installed annually, along with the current festive lighting contract.

FESTIVE LIGHTING PROPOSAL

Festoon Lighting

LED festoon style lighting will be added to both sides of Correction Wynd on the way to St Nicholas Street, ending at the TSB bank.

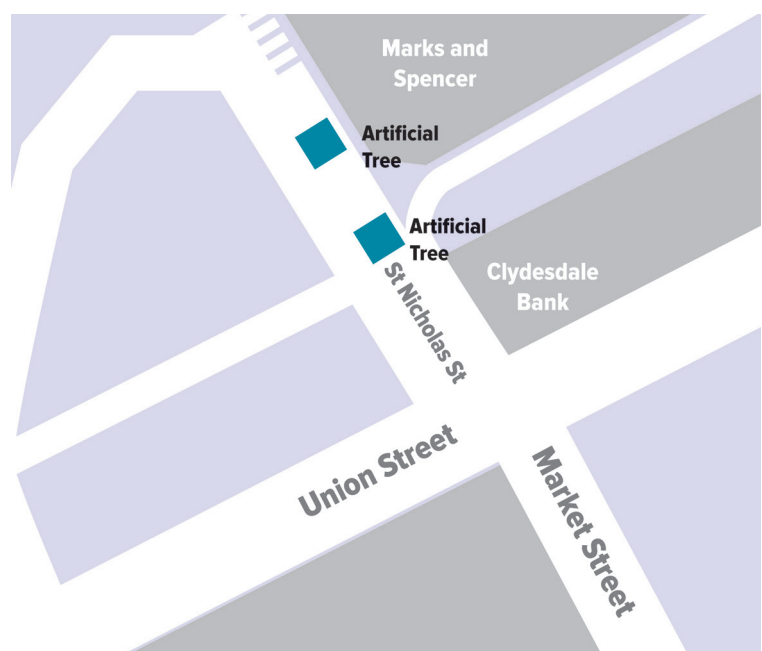
This festoon lighting will be removed at the end of the festive lighting display period but could be installed annually, along with the current festive lighting contract.



St Nicholas Street

Upon arrival in the St Nicholas Street pedestrian area you will be met with 2 additional 9.5m artificial Christmas Trees. These will both be located on the Marks and Spencer side of the pedestrian area, one opposite the entrance to Five Guys and the second further along towards Union Street near to the entrance of Marks and Spencer.

These features are in secured in place within concrete bases which will be dressed with white picket style fencing.



Union Street

The existing cross street festive lighting on Union Street between Market Street and Bridge Street will be enhanced with the addition of 3 artificial Christmas Trees. Currently this area is pedestrianised as part of the Space for People project and the Nativity scene is located nearby in St Nicholas Kirkyard.

9.5m high Christmas Tree dressed, lit with P Lights and with a star on top. These features are in secured in place within concrete bases which will be dressed with white picket style fencing.



FESTIVE LIGHTING PROPOSAL

Broad Street

Broad Street will see the return of three lit real Christmas trees at the front of Marischal College, the addition of a new arched lighting feature on the raised grass area a giant Santa positioned to the left of Marischal College welcoming people to the area and the lighting of the Marischal College Box Trees. These installations, along with the building's new lighting scheme which is currently in development, will create a visually stunning photo opportunity for residents and visitors alike.



Christmas Trees

The popular real lit Christmas Trees will return to the front of Marischal College. These trees will be approximate 15 foot high and dressed in white P Lighting.





Giant Santa

Santa is a large scale festive lighting display, 3.40 Metres High x 2.60Metres Wide. This feature will be located in the fenced area immediately to the left of the entrance to Marischal College. To increase the impact Santa will sit on a platform 2 metres off the ground.

Arche Cadeau

The Arche Cadeau is a large scale festive lighting display that is 4.70 metres high x 5.25 metres wide, which will create a big impact in this area of Broad Street and allow visitors a perfect photo opportunity.



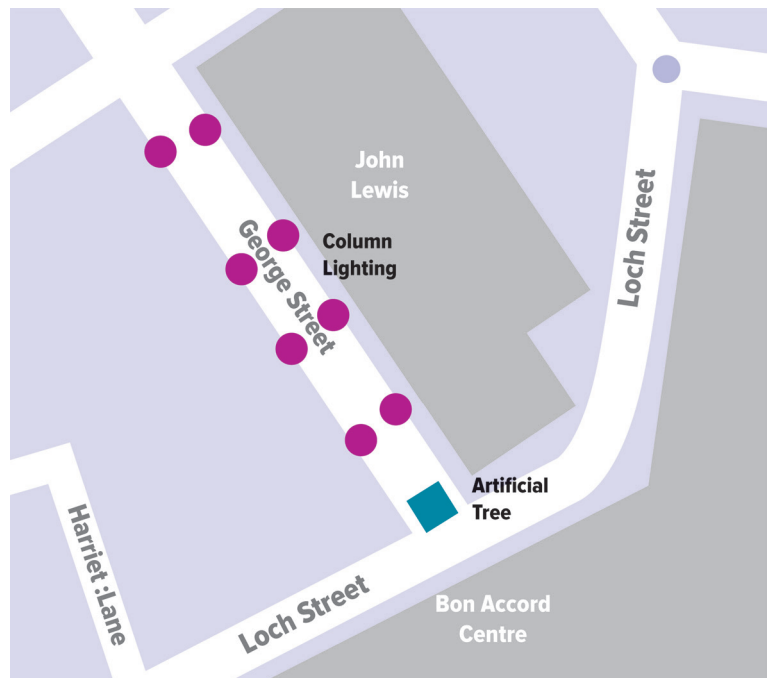
Tree Box Lighting

The 5 box trees within the Marischal College garden at Littlejohn Street and Gallowgate will be wrapped in white P lights.

FESTIVE LIGHTING PROPOSAL

George Street

Leaving the Bon Accord Centre onto George Street you will immediately see a lit Christmas Tree to the left of the entrance to John Lewis and 8 column lighting features will be added either side of the pedestrian area, creating an avenue of light.



Christmas Tree

9.5m high Christmas Tree dressed, lit with P Lights and with a star on top. These features are in secured in place within concrete bases which will be dressed with white picket style fencing.



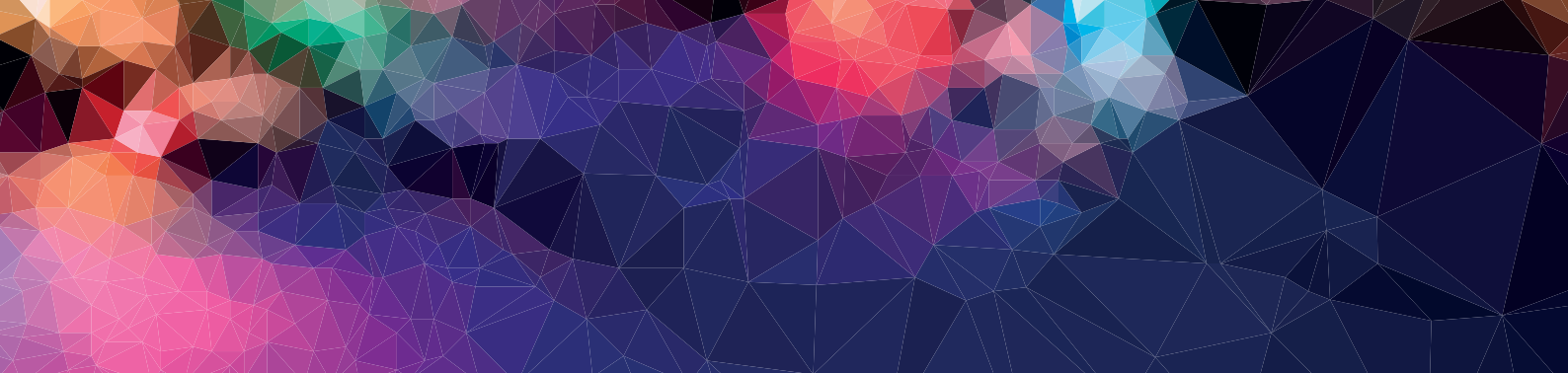
Column Mounted Lighting

Up to 8 column mounted lighting features will be added either side of the George Street pedestrian area. Examples of the type features are shown below, specific lighting features are subject to availability, and can only be confirmed once approval for expenditure is granted.

These column mounted lighting features will be removed at the end of the festive lighting display period but could be installed annually within the festive lighting programme for the city, in this location or elsewhere.



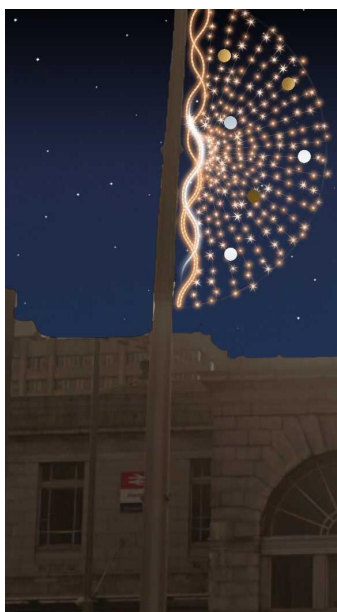
Example of potential lighting features, dependent on availability others may be used.



West End

8 column mounted lighting features will be installed between Rose St, Thistle St and Chapel St, complimenting the Spaces for People works within this area and extending the Council's annual festive lighting offering.

The column mounted lighting features, will be purchased to allow for Aberdeen City Council to install these additional features annually, along with the current festive lighting contract.



Example of potential lighting features, dependent on availability others may be used